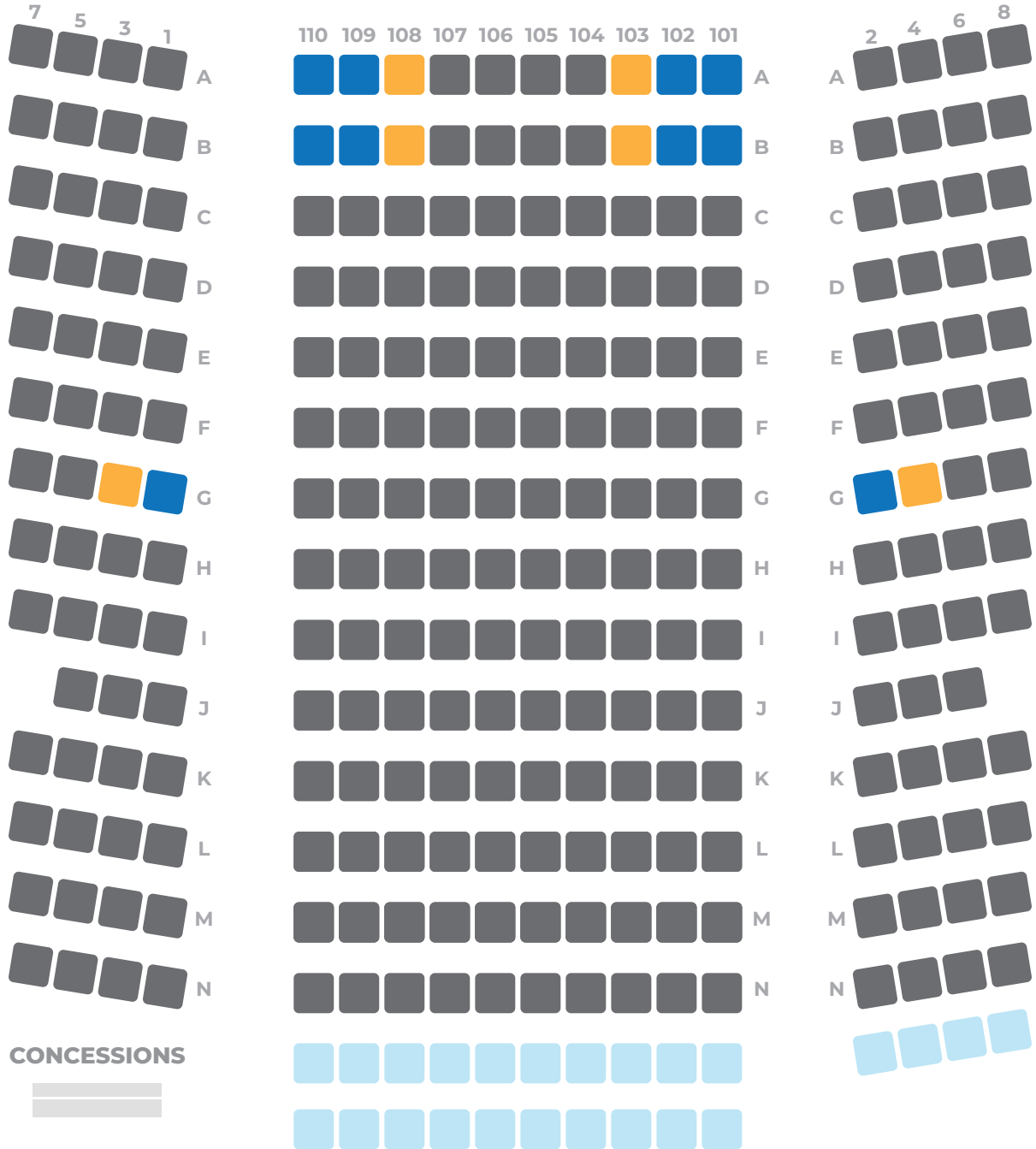




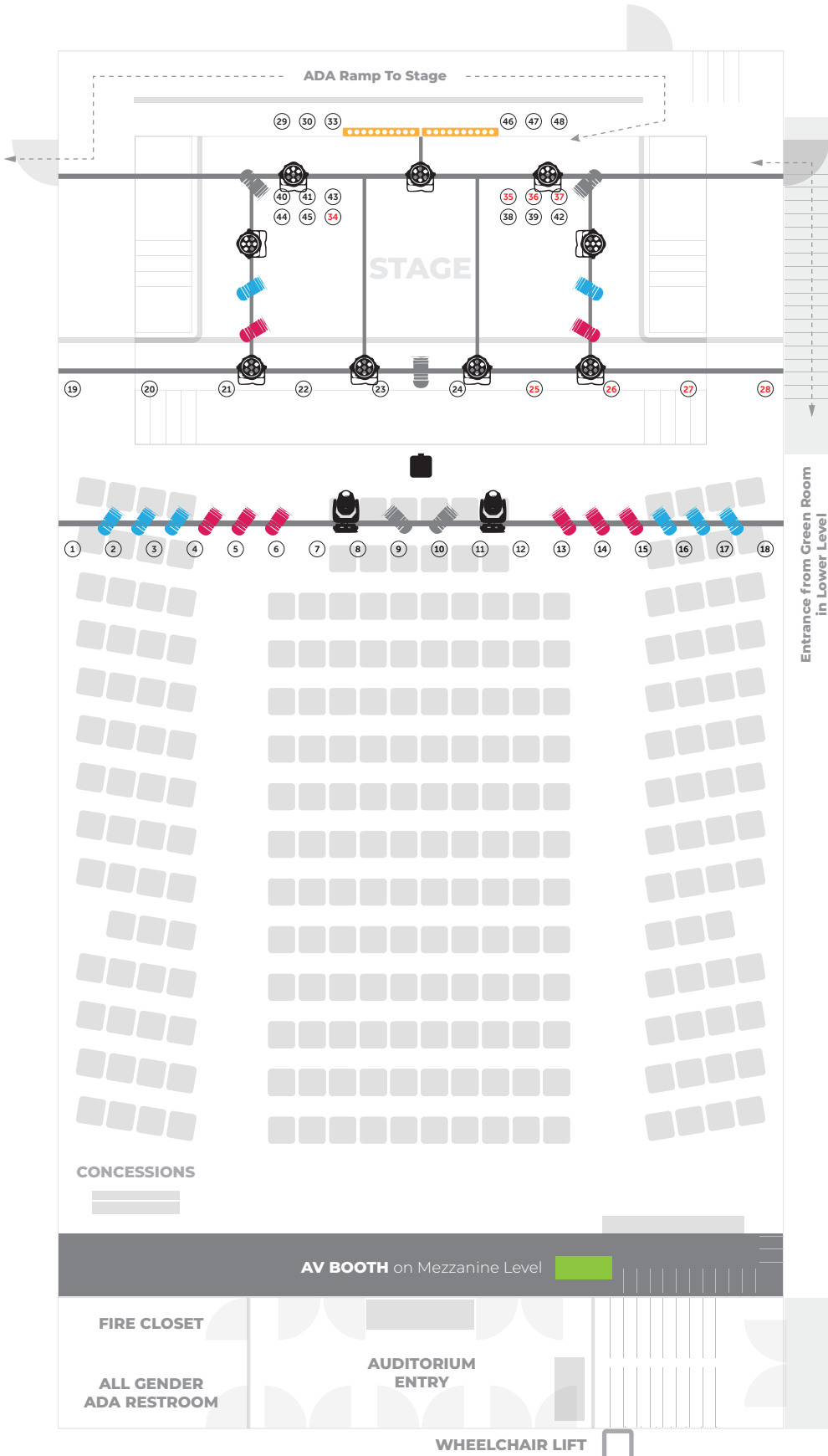
AUDITORIUM SEATING PLAN *(Upper Level)*



SEATING CAPACITY 266

- 242 - Fixed, Raked, Seating
- Companion Seating
- Wheelchair Seating
- 24 - Flexible Seating/Area

AUDITORIUM LIGHT PLOT (Upper Level)



LED FIXTURES

 9 - Chauvet COLORdash Par-Quad 18

 2 - Chauvet Pro Rogue R3 Spot

INCANDESCENT FIXTURES

 7 - No Color Special/Side Fill

 8 - Cool Wash

 8 - Warm Wash

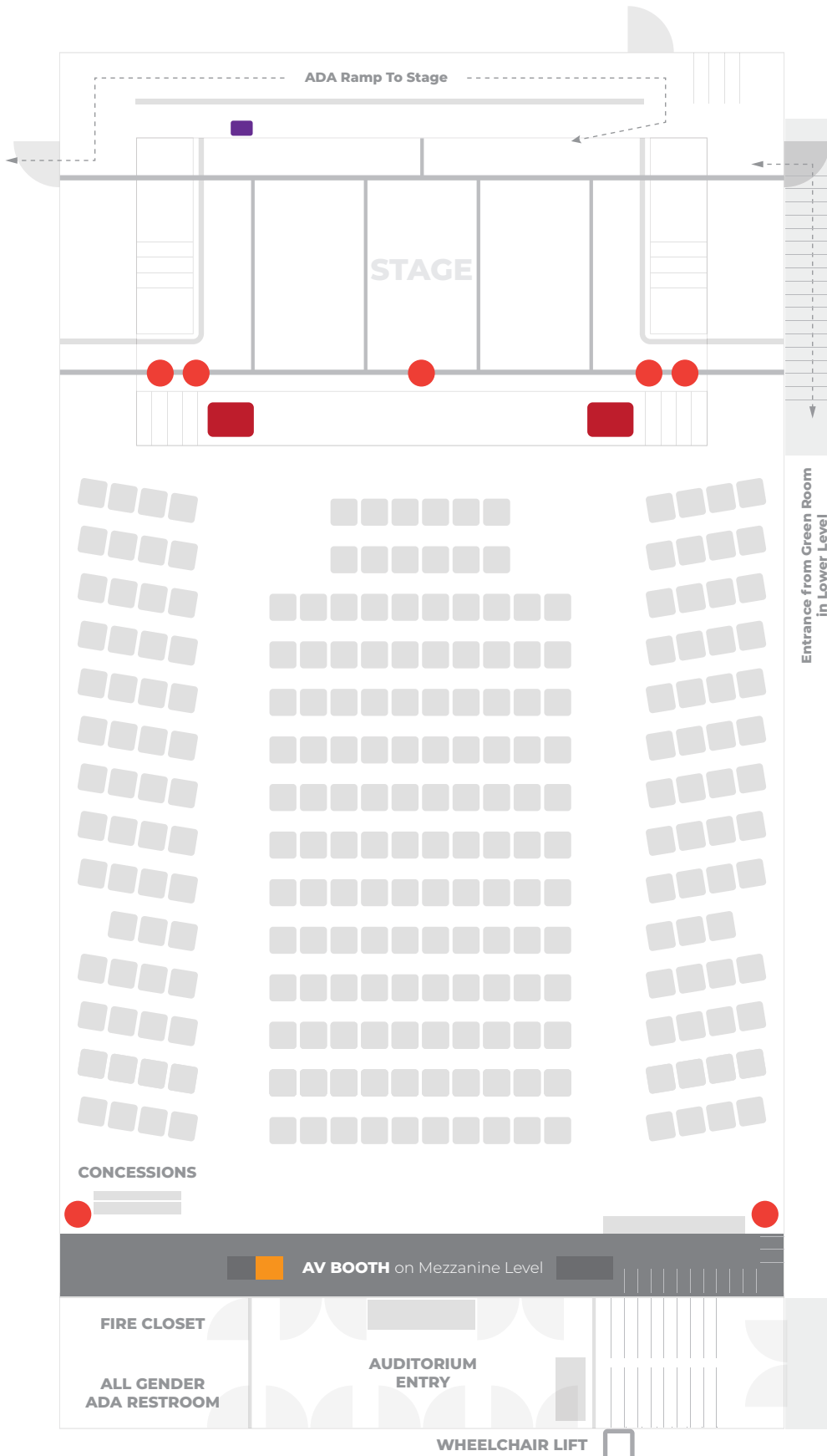
 2 - Zip Light Strip

 Sony Projector 7000 Lumens
HDMI connection located in the AV Booth

LIGHTING CONSOLE

 ColorSource 40 Console

AUDITORIUM SOUND PLOT & INVENTORY (Upper Level)



SOUND SYSTEM

- **7 - 15" Mackie 1600W**
Speakers flown
- **2 - 18" Mackie 2000W Sub**
Enclosed in the stage thrust
- **Behringer 32-ch Stage Box**
- **Behringer 32-ch Digital Mixer**
Located in the AV Booth
- 6 - Behringer 12" Monitor**

MICROPHONES

- 4 - Shure SM58 Wired Microphones**
- 8 - GTD Wireless Microphones**
- 4 - GTD Wireless Lapel Microphones**
- 1 - Shure PGA Drum Kit 7**

MULTIMEDIA

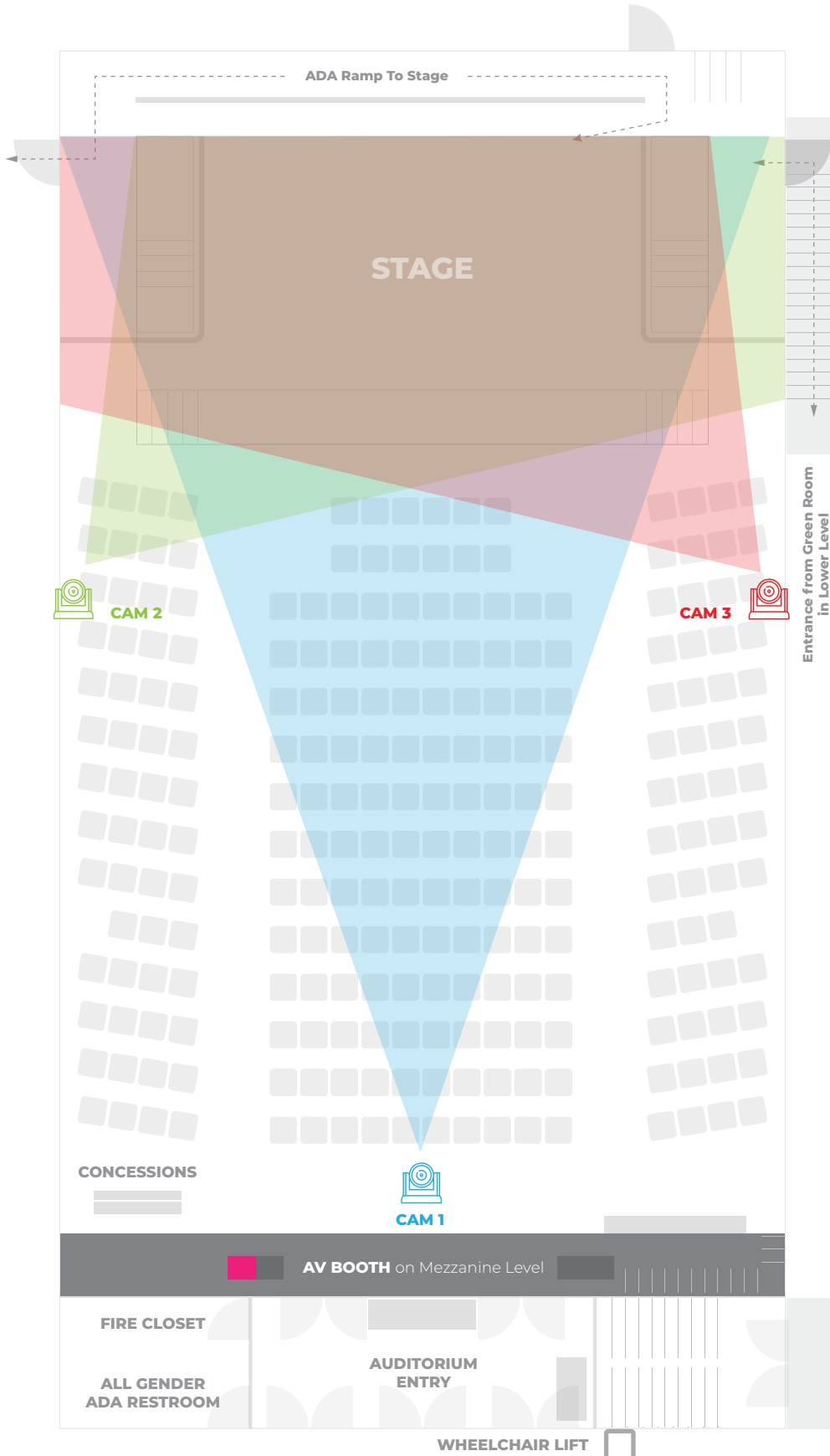
- Sony Projector 7000 Lumens**
Access via HDMI connection located in the AV Booth
- 17' Motorized Projection Screen**
- 3 - PTZOptics 30X Zoom SDI**

MISC EQUIPMENT

- 5 - ProD2 2-channel Passive Instrument Direct Box**
- 6 - Microphone Stands with Boom Arms**
- Logitech Presentation Clicker**



AUDITORIUM VIDEO/LIVE STREAM PLOT (Upper Level)



CAMERA SYSTEM



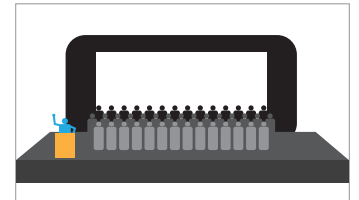
3 - PTZOptics 30X Zoom SDI
Pan, Tilt, Zoom Video System
1080p broadcast quality system

CONTROL SYSTEM

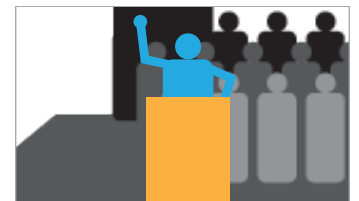


PTZOptics Controller Board

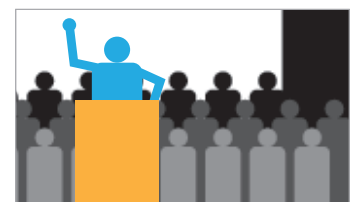
CAMERA 1 - Full Stage



CAMERA 2 - Stage Right

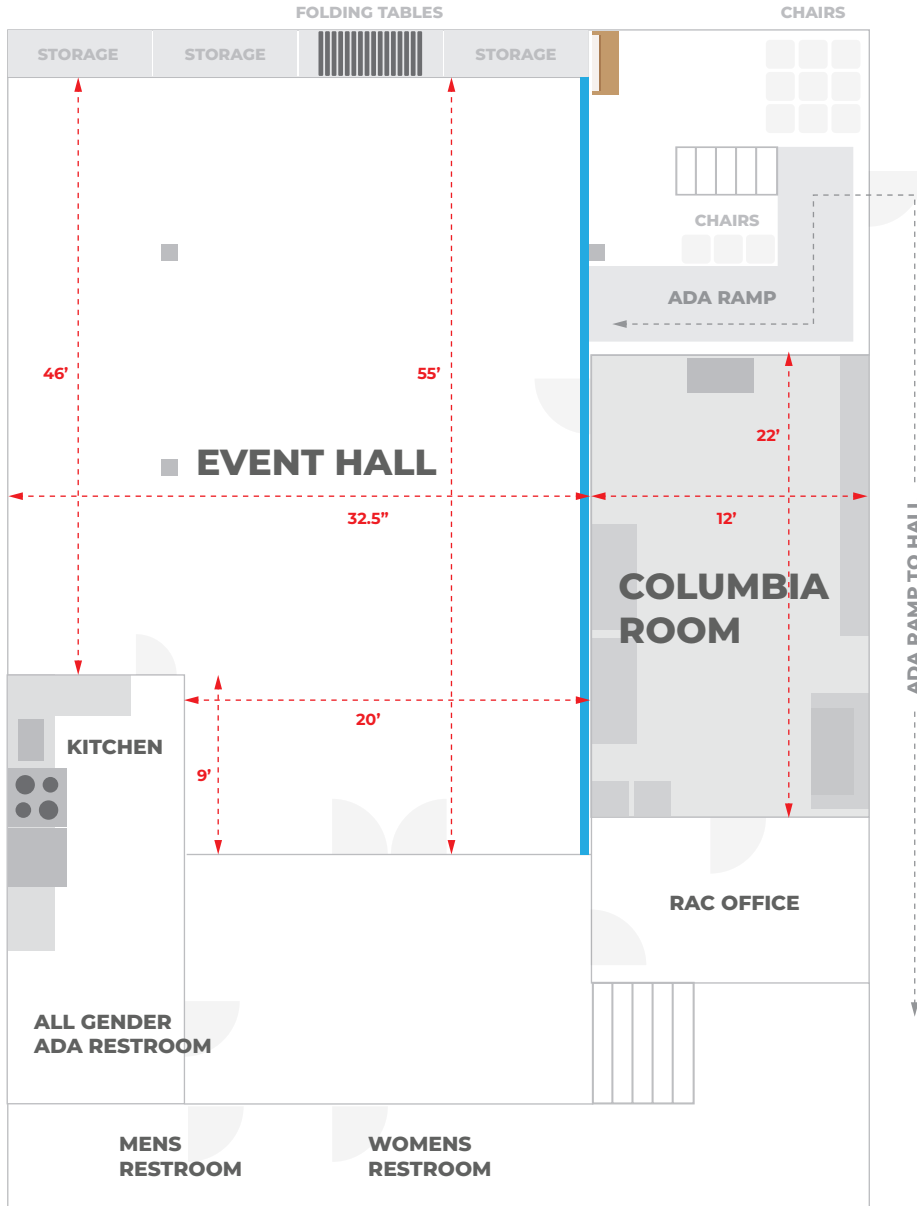


CAMERA 3 - Stage Left





EVENT HALL & COLUMBIA ROOM FLOOR PLAN *(Lower Level)*



EVENT HALL CAPACITY 140

- 15 - 6' Rectangular Banquet Tables
- 3 - 27" High Tops
- 100 - Stackable Chairs
- Hi-Speed WIFI
- 10' Projector Screen
16:9 Ratio
- Sony Projector 5200 lumens

- **Sound Dampening Drapes**
Drapes can be extended the full length of the North wall

- **Piano Upright**
on casters

CATERING KITCHEN

For hot/cold holding & service only

- 4 Burner Electric Stove
- Dishwasher
- Refrigerator
- Microwave
- Coffee Maker

COLUMBIA ROOM CAPACITY 16

- 2 - 6' x 2' tables
on casters, adjustable height
- 12 - Premium Chairs
- Comfortable couch
on casters
- Hi-Speed WIFI
- 4 - Laptop Stations and/or Makeup Stations
- 4 - 10" Vanity Mirrors
- 40" LED Screen
HDMI connection
- Dry-erase Board
- Wardrobe Rack
- Full Length Mirror



ROOM SPECS & INVENTORY

AUDITORIUM SPECS

Room Size: 3,150 sq ft
Room Dimensions: 70 ft x 45 ft
Audience Capacity: 266
Fixed Seats (raked): 242
Flexible Seating: 24

STAGE SPECS

Stage Dimensions: 32ft wide x 19ft deep
Deck Height: 22.5in
Deck Material: Masonite (black)

LIGHTING EQUIPMENT

1 - ColorSource 40 Console
9 - Chauvet COLORdash Par-Quad 18
2 - Chauvet Pro Rogue R3 Spot
7 - No Color Special/Side Fill
8 - Ellipsoidal Cool Wash
8 - Ellipsoidal Warm Wash
2 - Zip Light Strip

MEDIA EQUIPMENT

* Sony Projector 7000 lumens
* 17' Motorized Projection Screen
* 3 - PTZOptics 30X Zoom SDI

SOUND EQUIPMENT

7 - 15" Mackie 1600W
2 - 18" Mackie 2000W Sub
Behringer 32-ch Stage Box
Behringer 32-ch Digital Mixer
6 - Behringer 12" Monitor

WIRED MICROPHONES

4 - Shure SM58 Wired
1 - Shure PGA Drum Kit 7

WIRELESS MICROPHONES

* 8 - GTD Wireless Microphones
* 4 - GTD Wireless Lapel Microphones

MISC. EQUIPMENT

6 - ProD2 2-channel Passive Instrument Direct Box
6 - Microphone Stands with Boom Arms
Logitech Presentation Clicker

FURNITURE

1 - Lectern
1 - Grey Couch
12 - Premium Chairs
1 - 8' Tiered Concession Station
2 - Reception Stations

EVENT HALL SPECS

Room Size: 1,782 sq ft
Room Dimensions: 54 ft x 33 ft
Room Capacity: 140

MEDIA EQUIPMENT

* Sony Projector 5200 lumens
* 10' Projection Screen

MISC. EQUIPMENT

Sound Dampening System
Piano (Upright)

FURNITURE

15 - 6' Rectangular Banquet Tables
3 - 27" High Tops
100 - Stackable Chairs
1 - Lectern

COLUMBIA ROOM SPECS

Room Size: 264 sq ft
Room Dimensions: 22 ft x 12 ft
Room Capacity: 16

MEDIA EQUIPMENT

40" LED Screen

MISC. EQUIPMENT

Dry-erase Board
4 - 10" Vanity Mirrors
4 - Makeup Stations
Full Length Mirror
Wardrobe Rack

FURNITURE

1 - Grey Couch
12 - Premium Chairs
2 - 6' Tables on casters/adjustable height

* CATERING KITCHEN

For hot/cold holding & service only

4 Burner Electric Stove
Dishwasher
Refrigerator
Microwave
20 cup Coffee Maker

*** Additional fee applies.**

Additional equipment available upon request.